

**Sheridan County Acreage \* 4 Acres +/-**

Hay Springs

4242 600th Road, Hay Springs, NE, USA

4.0 Acres

\$144,500.00

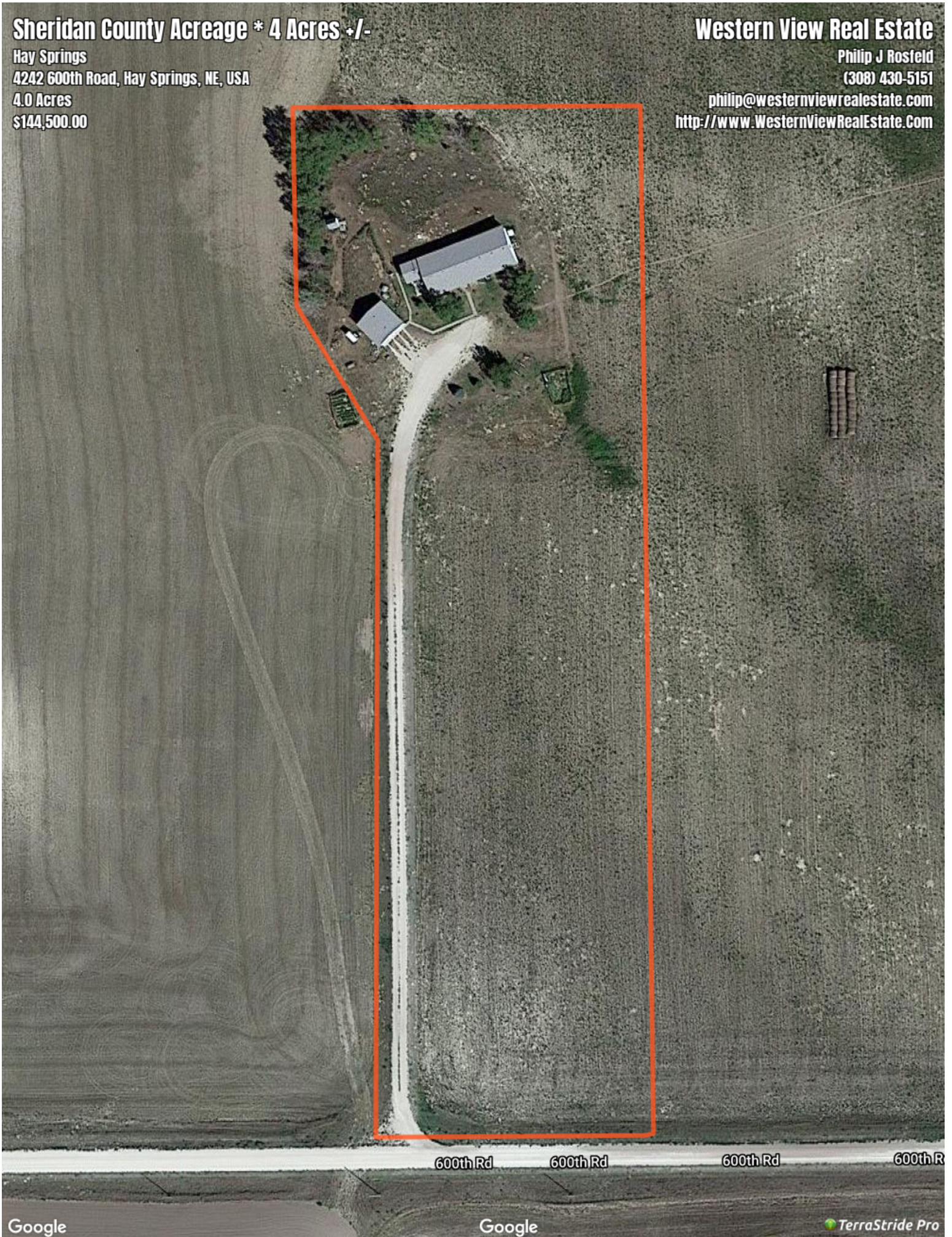
**Western View Real Estate**

Philip J Rosfeld

(308) 430-5151

[philip@westernviewrealestate.com](mailto:philip@westernviewrealestate.com)

<http://www.WesternViewRealEstate.Com>



# Sheridan County Acreage \* 4 Acres +/-

## Legend

 Boundary

## Description

Call today to schedule a showing! Contact Western View Real Estate, Jessica Brueckner, Broker Associate, \* 308-432-6828 Day or Night 308-430-4094 OR Donny Grantham, Sales Associate, 308-432-6828 Day or Night 308-430-4678 \* All information has been provided by sources deemed reliable, however accuracy is not guaranteed. Prospective buyers are responsible to verify all information to their satisfaction. Offering is subject to approval of purchase by owner, prior sale, price change, correction or withdrawal without notice. There may be variations between the property boundary & the location of existing fences. There may also be variations as to the specific acreage within the boundary of the property. Seller makes no warranties in this regard. Maps are based upon legal description & not to scale. The location of the property boundary & existing fences is approximate. Maps are for visual aid with accuracy not guaranteed. Western View Real Estate

DISCLAIMER: The information contained herein is as obtained by this broker from sellers, owners, or other sources. This information is considered reliable, neither this broker nor owners make any guarantee, warranty or representation as to correctness of any data or descriptions and the accuracy of such statements. The correctness and / or accuracy of any and all statements should be determined through independent investigation made by the prospective purchaser. Any offer for sale is subject to prior sale, errors and omissions, change of price, terms or other conditions or withdrawal from sale in whole or in part, by seller without notice and at the sole discretion of seller. Readers are urged to form their own independent conclusions and evaluations in consultation with legal counsel, accountants, and/or investment advisors concerning and all material contained herein.

Generated on: July 21, 2020